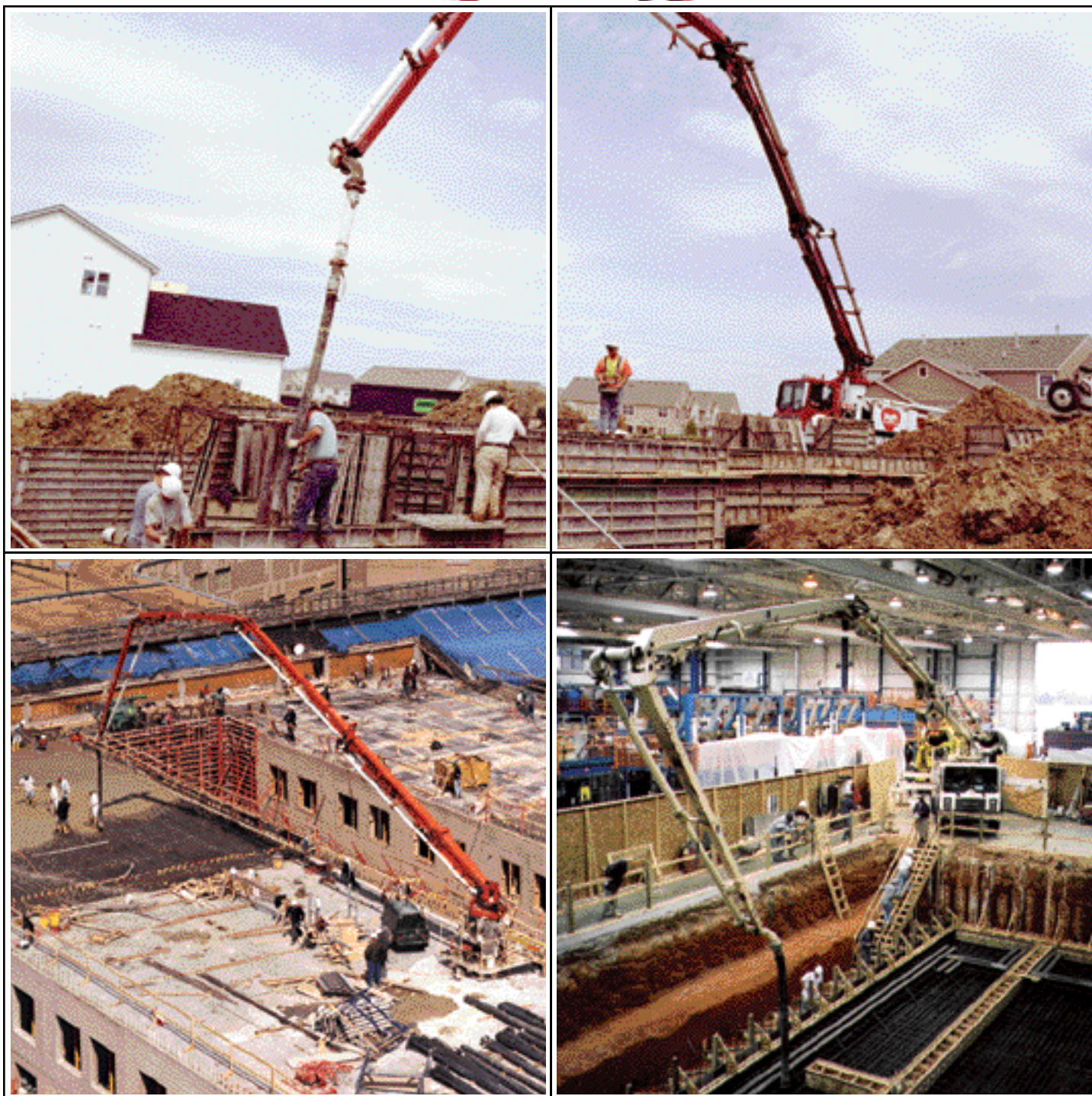




SCHWING
AMERICA INC.

KVM 32XL **KVM 32XG**

**Truck-Mounted Concrete Pump
with 4-Section Placing Boom
and Detachable Boom Option**



The Lowest Cost of Ownership and Schwing Quality

Invest in a concrete pump that will return the lowest cost of ownership and provide the consistent reliability only a Schwing offers. Calculate operating costs, uptime availability and resale and no other concrete pump comes close to the value of a Schwing. Bank on the experience of the most stable pump manufacturer in North America to be your long term partner in pumping. Our parts and service support are so deep the others will never catch up. And with the popular 32-meter boom size, you are ready for the majority of

pumping jobs to provide fast payback on your investment. When you pump with a Schwing, your business gets instant recognition by customers. That recognition turns to respect as your Schwing's reliability and performance finishes job after job.

Depending on your use, Schwing offers the best selection of pump kits with outputs and pressures to meet your needs for

the demanding job requirements. The Rock Valve™ that sequences concrete from the material cylinders to the boom is standard on all models. This critical component separates a Schwing from every other concrete pump on the market. The only completely rebuildable valve on the market ensures low maintenance cost.

Schwing makes your choice of a 32-meter even easier by offering two models.

- The **32XL** offers two pump kits with high output, high pressure capabilities and all of the latest controls and features.
- The **32XG** is a budget-minded model with excellent functionality and all the reliability and quality of the entire Schwing line.

Order the detachable boom option and your concrete pump gains even more versatility by offering remote boom placement.

Four-section overhead Roll & Fold® design allows maximum boom utilization, and a low unfolding height of 25'-4".

Common elbows on boom simplify spare parts stocking.

Proven large diameter rotary bearing for smooth rotation.

Electronically driven hydraulic oil cooler.

Storage for 150 feet of slickline with fold down side boards for easy access.

Gradual taper from 7" outlet to 5" boom pipe assures smooth concrete flow.

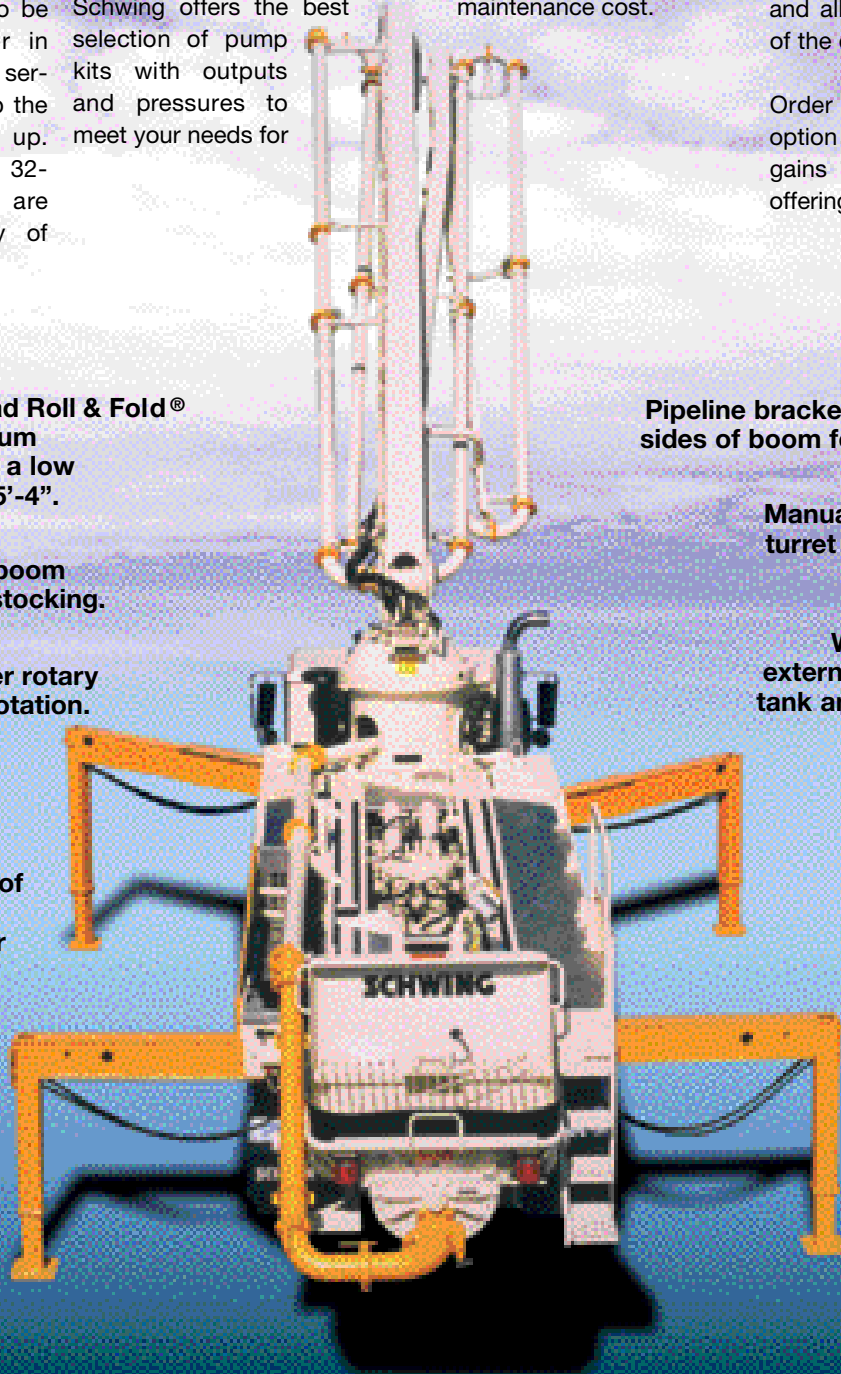
Pipeline brackets are welded on both sides of boom for secure attachment.

Manual boom controls near turret for easy access once boom is unfolded.

Water system features external pump, high volume tank and outlet near hopper.

Hydraulically driven agitator with optional hopper vibrator assures continuous, smooth flow of concrete to the pumping cylinders.

Rock Valve™ offers lowest cost per yard operation.



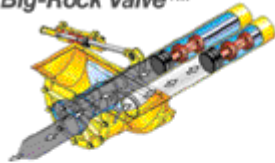
The World's Best Design in Two Models

You simply can't go wrong when you choose a Schwing 32XL or XG. Both share the proven twin-cylinder all-hydraulic pumping system that has performed for more contractors than any other pump. All models utilize the proven Rock Valve™ that routes concrete from the material cylinders to the boom. This component is a Schwing exclusive that offers the lowest maintenance cost pumping the widest variety of mix designs. It has a self-adjusting pressure spring that keeps wear parts in alignment resulting in years of service with minimal maintenance. The Rock Valve™ is the only totally rebuildable valve on the market for long term cost savings. Choose the optional Big-Rock™ for a larger feed area to the extended valve that can be advantageous when feeding harsh mixes at high volumes.

Rock Valve™



Big-Rock Valve™



Entry level pumpers choose the XG model for long term value and a lower initial purchase price. All of the same operator convenience features are here. The XG saves money through slightly lower pressure pump kit and white paint with one-color graphics. Ask your Schwing representative if the XG is right for your operation.



32XL Standard Equipment

- Generation III Pump Kit
- Carbide Wear Parts
- Super 3000 Pipe
- Proportional Boom Controls
- Night Light Kit



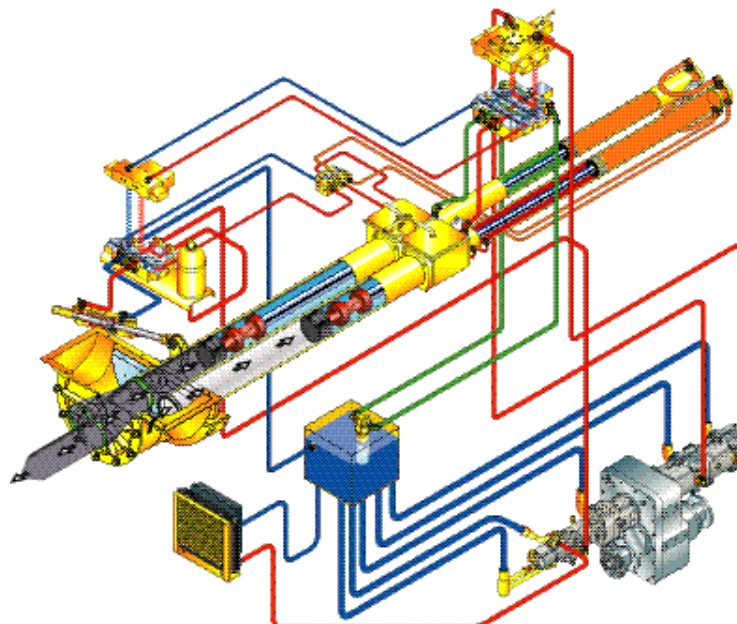
32XG Standard Equipment

- 1200 Pump Kit
- Radio Remote
- Hopper Vibrator
- Proportional Boom Controls
- Night Light Kit

Pump Kits

| | 32XG: 1200 | 32XL: 2023-4 | 2023-5 |
|-------------------------------------|------------|--------------|--------|
| Theor. Concrete Output (cu./yds/hr) | 170 | 170 | 209 |
| Max. Pressure on Concrete (psi) | 759 | 1007 | 1007 |
| Max. Strokes/Min. | 26 | 26 | 32 |
| Pump Cylinder Diameter (in.) | 9 | 9 | 9 |
| Pump Cylinder Stroke Length (in.) | 79 | 79 | 79 |
| Differential Cylinder Size (in.) | 4.9 | 5.1 | 5.1 |
| Max. Aggregate Size (in.) | 2.5 | 2.5 | 2.5 |
| Hydraulic System Pressure (psi) | 4350 | 5075 | 5075 |

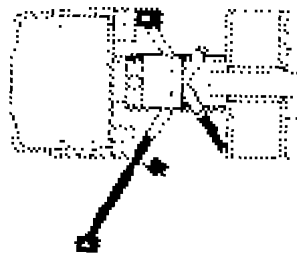
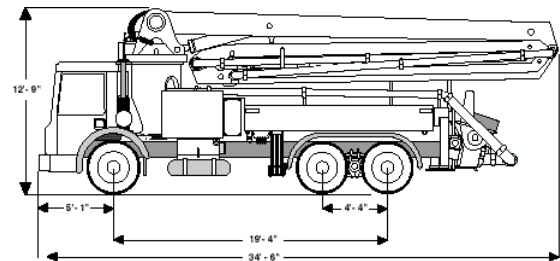
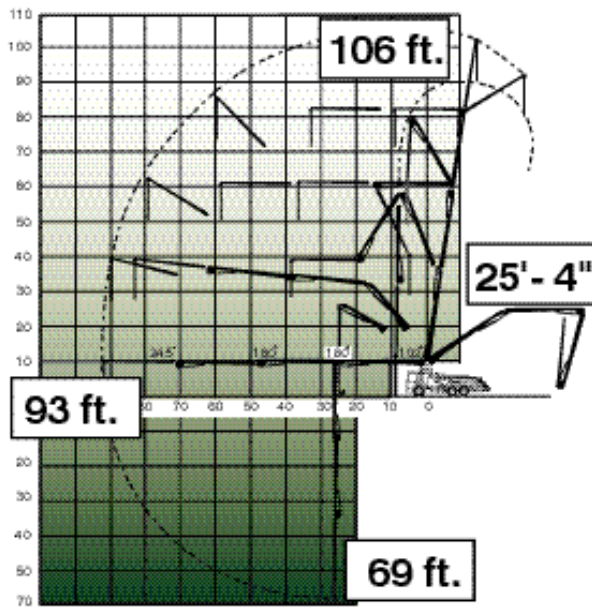
Specifications are subject to change without prior notice



Four-section boom versatility and operator convenience

Use the proven four section Roll and Fold® boom to reach in, out, down, over and under. The possibilities are endless and the results impressive when you snake this boom into buildings, under bridges, and into excavations. Low folding height of 25'-4" allows the boom to be used in enclosed settings.

Fully extended, the 32 meter pumps out medium rise structures. A boom with this agility performs where no other method of concrete placement can. The entire pump and boom rides on a rigid torsion subframe. Rock solid stability in all boom positions is the result even at maximum output.

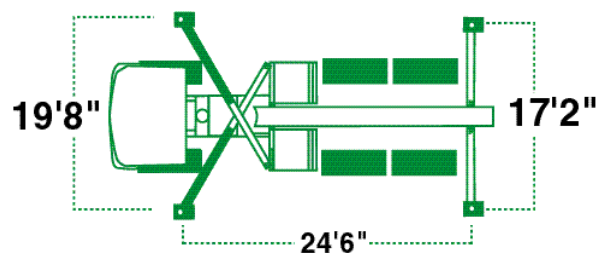


◀ Unique "X" style outriggers set-up fast on crowded job sites by telescoping out to provide firm footing.

Maximum stability in the smallest space is provided by the "X" style hydraulic outriggers. ▼

| Boom Specifications | | U.S. | Metric |
|-------------------------|----------------|---------|---------|
| Pipeline Diameter | | 5" | 125 mm |
| Vertical Reach | | 106' | 32 m |
| Net Horizontal Reach | | 84' 4" | 25.7 m |
| Reach from Slewing Axis | | 93' | 28.3 m |
| Unfolding height | | 25' 4" | 7.5 m |
| Section Length | First Section | 25' 11" | 7.9 m |
| | Second Section | 23' 1" | 7 m |
| | Third Section | 23' 1" | 7 m |
| | Fourth Section | 20' 10" | 6.3 m |
| Slewing Range | | 400° | 400° |
| End hose length | | 12' 6" | 4000 mm |

Specifications are subject to change without prior notice



Revolutionary methods in concrete placement

Concrete placement methods and equipment enter a new era of efficiency with Schwing Detachable Placing Booms. Combined with the right concrete pump, these placing booms provide a systematic method of concrete distribution. The benefits of Schwing Detachable Placing Booms are many; concrete placement speed is increased as much as 50 percent over the tower crane and bucket method. Also, pumping reduces segregation of aggregates in concrete and delivers higher strength mix at a steady rate for higher productivity. Labor requirements are less - one person operates the placing boom for uniform concrete placement in wall, column and deck forms. With a con-

crete pump/detachable placing boom combination, a tower crane is free to handle other necessary lifting.

The 32 meter boom gains added versatility with the optional quick disconnect feature. Contractors use the detachable boom for remote pours for the first part of a day and then quickly reattach the boom for conventional pours such as slabs and walls in the afternoon. The quick couplings are easily removed to free the boom from the truck. The boom is remounted to a Schwing pedestal using the system. The pedestal can be located hundreds of feet from the pump and connected with pipeline.



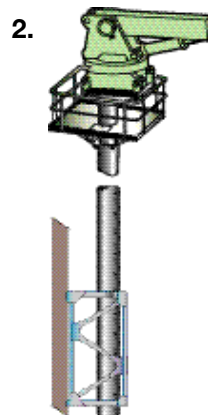
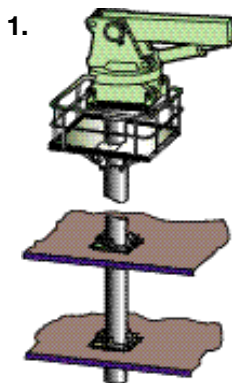
| Separate Placing Boom | KVM 32 |
|--------------------------------------|--------|
| Pipeline Diameter | 5" |
| Maximum Reach | 92' |
| Boom Sections | 4 |
| Slewing Range | 400° |
| Boom Coverage (sq. ft) @ 360° radius | 27,175 |

Specifications are subject to change without prior notice

Optional electric or diesel driven hydraulic power pack is available to provide all boom functions. Complete power pack includes 30 gallon hydraulic tank and hand lever controls mounted near the boom bearing block.

Self climbing mast is also available.

Versatile Mounting Options



1. Boom and mast floor frame supported.
2. Mast mounted to the sides of a structure with brackets.
3. Foundation mounting with bolted cross frame.

The **SCHWING** Experience



When there is so much riding on your concrete pump, experience the difference Schwing makes with after sale support that adds so much value. It starts with the largest stock of replacement parts strategically located throughout North America. And you'll notice the difference when you call 24 hours a day for service support. Attend one of our service seminars and learn from factory experts in the classroom and on actual machines. Plus Schwing arms you with the widest array of educational tools to understand your concrete pump inside and out. These are the reasons that Schwing has built the strongest foundation in the concrete pumping industry and why more successful contractors have built a future with Schwing.

PARTS

Where you want them, when you need them.

First you build the parts department and then you build a successful company. That's the Schwing philosophy to keep our customers successful. We verify your decision to purchase a Schwing concrete pump everytime you order a spare part. Fast response from knowledgeable parts professionals – many with more than 15 years experience – keep you pumping and profitable. Parts are staged throughout North America at six company locations and also at stocking dealers.

When your reputation and the job is on the line operating a pump without parts support is a big gamble. Call our toll free parts number 15 hours a day to discover the Schwing difference.

SERVICE

The SCHWING Way
24 hours a day, six days a week

How can we service our customers 24 hours a day, six days a week? One word answer - **dedication.** That's how much we care about your business. When you call, expect a person who knows your pump thoroughly. Many times we can talk you through your situation and you're back pumping right away. If you need on-site service, skilled servicemen are positioned regionally to be at your location quickly. There's no way to measure the piece of mind you get knowing a Schwing serviceman is only hours away. Schwing goes one step farther than other manufacturers. Certified Schwing boom inspectors travel the country regularly. Schedule your boom inspections on a regular basis for long term boom life.

TRAINING

Join the Leaders

Successful Schwing owners report that a trained operator makes all of the difference to the bottom line. Three levels of week-long training schools prepare your operators for many of the situations they will encounter on the job. A dedicated training facility at our Minnesota factory provides education in:

- Basic Hydraulics
- Basic Electronics
- Beginning Schematic Reading
- Common Parts and how they function
- Emergency Jobsite Repairs
- Safety & Safe Operating Procedures
- Hands-on Troubleshooting

Second and third levels are aimed at advanced training for mechanics.

MADE IN THE U.S.A.

Most of SCHWING's pumps are manufactured and tested at our state-of-the-art facility in St. Paul, Minnesota.

Visit our factory and see why Schwing craftsmanship really matters to your success.



The Rock Valve™ and Roll and Fold® are registered trademarks of Schwing America.



5900 Centerville Road
St. Paul, MN 55127
P: 651.429.0999
F: 651.429.3464
1.888.SCHWING
www.schwing.com

Represented by

